

BUILDECK



Scaffold-Based Decking System

Patented System GB 2518159
1400kg load capacity
Create a platform at any height
Fit any space / shape
Bespoke design service
Corporate colour option

The BuilDeck System uses standard scaffold tubes and fittings, providing a safe, load-bearing platform at any height.

Can be designed to fit any shape, with custom panels to suit.

A patented system with a load capacity of 1430kg/m^2 / 14.3kN/m^2

The strongest in the industry.

Our system can be delivered anywhere in the UK.

Patented System
GB 2518159



Safe & secure
in all conditions

High load capacity



Versatile & Adaptable

Rapid installation



Independently tested
Compliance

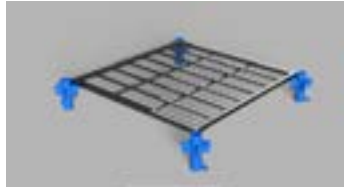
Stronger than anything on the market, using BuilDeck ensures the highest levels of safety on your site. BuilDeck is made from 99% Recyclable Materials.

BUILDECK

BUILDECK

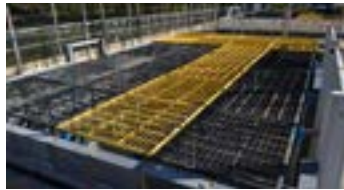
BUILDECK PANELS

Fully adjustable floor panels can be easily installed to provide an incredibly safe, stable and strong working platform.



BUILDECK LAPMATS

BuilDeck have created a system that allows for a perfect customised fit for your project.



BUILDECK HATCH

The BuilDeck System can be hand railed and toe boarded to TG20:13.



BUILDECK BOSS

Our unique design allows complete integration with standard scaffolding.



TRANSPORT & STORAGE

compact stacking system, allowing easy storage and loading.



Patented System

GB 2518159

14.3kN/m² load capacity

Variable Height

Fully Integrated system

Bespoke Design service

Limitless applications

Corporate colour option

Available UK wide



Scaffold Board Grading



www.buildeck.co.uk

T: +44 7990 518438 | E: Info@buildeck.co.uk

Registered Office: 2nd Floor Denmark Court, 18 Market Place, Wokingham, Berks. RG40 1AL

BUILDECK